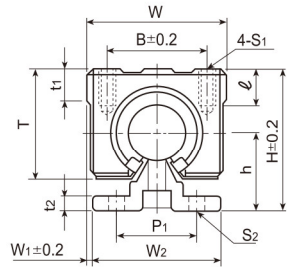


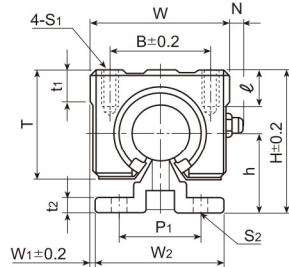
Shaft Type Linear Guides

LMC-C LMCL-C

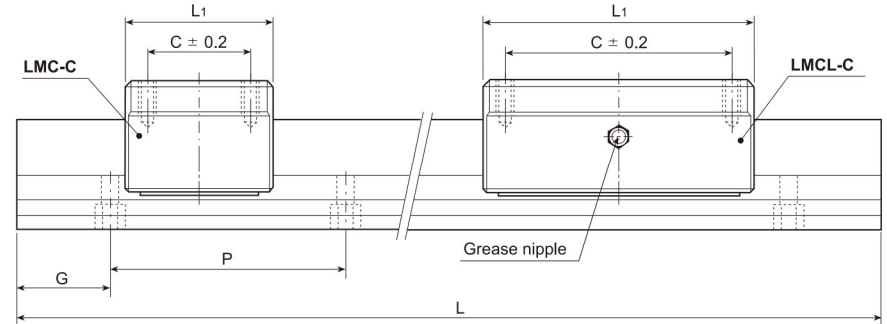
Anticorrosive Linear Guide
Linear Block : Linear ball bearing type



LMC-C
LMC-C12 ~ LMC-C40



LMCL-C
(Long Type)
LMCL-C12 ~ LMCL-C30



unit : mm

Model No.	Shaft diameter	Dimensions of assembly				Dimensions of block							
		H	h	W ₁	W	L ₁	B	C	t ₁	ℓ	S ₁	T	N
LMC-C12	12	34.5	19.5	2	36	34	26	24	7	10	M5	24	—
LMCL-C12						68							45
LMC-C16	16	45	25	2.5	45	45	32	30	9	12	M5	33	—
LMCL-C16						85							60
LMC-C20	20	50	27	1.5	48	50	35	35	11	12	M6	39	—
LMCL-C20						96							70
LMC-C25	25	60	33	2.5	60	65	40	40	14	12	M6	47	—
LMCL-C25						130							100
LMC-C30	30	70	37	5	70	70	50	50	15	18	M8	56	—
LMCL-C30						140							110
LMC-C40	40	90	48	7.5	90	90	65	65	20	20	M10	72	—

Dimensions of track rail						Basic dynamic load rating	Basic static load rating	Model No.
W ₂	P ₁	t ₂	P	S ₂	L (max)	C (kgf)	Co (kgf)	
32	23	4	100	4.5	4,000	42	61	LMC-C12
						84	122	LMCL-C12
40	30	5	150	5.5	4,000	79	120	LMC-C16
						158	240	LMCL-C16
45	30	5	150	5.5	4,000	90	140	LMC-C20
						180	280	LMCL-C20
55	35	6	200	6.5	4,000	100	160	LMC-C25
						200	320	LMCL-C25
60	40	7	200	6.5	4,000	160	280	LMC-C30
						320	560	LMCL-C30
75	55	9	300	9	4,000	220	410	LMC-C40

Example of identification number:

LMC-C25-B2-2400
① ② ③ ④

- ① Model No: LMC-C, LMCL-C
- ② Shaft Diameter (mm): Shaft : Hardened(HRC62±2)ground and chromium plated
Shaft type: SCFB
- ③ Number of blocks per track rail: B1: 1 Block B2: 2 Blocks B3: 3 Blocks,...
- ④ Length of track rail: (2400mm)