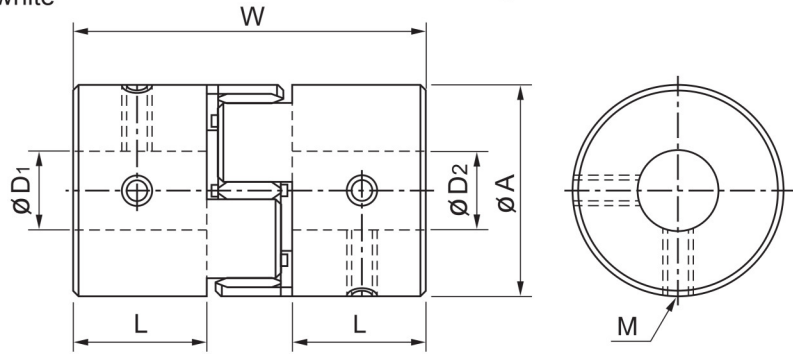


# Flexible Couplings

## MTC Flex couplings



- **Body material** : Aluminum alloy
- **Buffer material** : PU (hardness:red/95 Sh A)
- **Surface Treatment** : Anodizing standard white
- **Features**
  - High torque
  - High rigid
  - Great shock resistance
  - Suitable for general transmission , high inertia and cutting mechanism.
  - **Fixed mode** : Set screw type



### DIMENSION

unit:mm

Product No	A	L	W	Stock Bores D1xD2 (H8)		M
				Min D1	Max D2	
MTC-30RD	30	11	35	6	14	M4
MTC-40RD	40	25	66	8	20	M5
MTC-55RD	55	30	78	10	25	M6
MTC-65RD	65	35	90	12	35	M8

### SPECIFICATIONS

\*Max. Bore Moment of Inertia

\*\*Max. Bore Mass

Product No	Rated Torque (N.m)	Max. Torque (N.m)	Max. Rotational Frequency. (min <sup>-1</sup> )	Moment* of Inertia (kg.m <sup>2</sup> )	Error of Eccentricity (mm)	Errors of Angularity (°)	Errors of Shaft End-play (mm)	Mass** (g)
MTC-30RD	12.5	25	13000	5.9X10 <sup>-6</sup>	0.10	1°	± 1.0	46
MTC-40RD	17	34	9600	4.0X10 <sup>-5</sup>	0.10	1°	± 1.2	150
MTC-55RD	60	120	7000	1.7X10 <sup>-4</sup>	0.10	1°	± 1.4	350
MTC-65RD	160	320	5900	3.9X10 <sup>-4</sup>	0.10	1°	± 1.5	570

#### When Ordering

When Placing an order, make sure to include product No. and stock bores (both sides) of product.

MTC-30RD-φ8 – φ10 Product No : D1 D2